

AROUND THE

Circle Newsletter

Circle of Concern
Food Pantry



A Note from Cyndi

Change is Coming. Our Circle is Growing!

I'm excited to share with our community that Circle's Board of Directors recently approved a multi-focused construction project that includes a new 4,200 square foot warehouse; increased pantry, cooler and refrigeration spaces; additional staff offices, improvements to our parking and more.

The project, launching later this summer, will enable us to serve more families, while also improving safety and efficiency throughout our operations.

We look forward to sharing more details with you in the coming weeks, including opportunities to be a part of this exciting season of growth for Circle!

Cyndi

Cynthia R. Miller
Executive Director

Feeding Families and So Much More

Spring is here and with it come longer days, summer plans and, for many families, the end of the school year.

Circle has many "wraparound" programs that serve our low-income families in the spring and summer months. Right now, clients are applying for our Summer Opportunities program, which provides up to \$200 for children 5 to 18 years of age to attend a camp or activity, or swim lessons for 3 to 5- year-olds. We are accepting applications until late June for our college

Continued on page 2

Current Needs:

- Condiments
- Dinner Helpers
- Cereal/Oatmeal
- Canned Tomato Products
- Snacks (8-12 servings)
- Bar Soap
- Women's Incontinence Briefs Size L & XL
- Mouthwash
- Razors

OUR MISSION:

Circle of Concern feeds the hungry and provides assistance to low-income families living in our community.

OUR VISION:

Improving every life in our community by reducing hunger and poverty.



Circle of Concern
FOOD PANTRY

*Feeding Families is
Just the Beginning*

WELCOME OUR NEW STAFF MEMBERS!

Brittnie Selbert

Volunteer Manager

Kathy Bratkowski

Community Relations Manager



New Team Members

Circle of Concern is thrilled to welcome two new team members! Say hello to Brittnie Selbert, our new Volunteer Manager. A horticulturist, certified yoga instructor, and experienced team leader, Brittnie has been part of the Circle family as a volunteer and we're so excited to see her lead our amazing volunteer program. "I'm honored to be a member of the Circle team and serve our community, alongside our amazing volunteers! It's been a pleasure connecting with everyone already, and I look forward to being a part of this incredible organization's next chapter," Brittnie said.

And please welcome Kathy Bratkowski, our new Community Relations Manager. A storyteller at heart, Kathy is an award-winning producer, writer, and communications pro with a passion for missions that matter. She'll be the voice behind our newsletters, social media, website, and more. "I'm so excited to share the stories of Circle with the community," said Kathy. "It's great to work with such a talented team of staff and volunteers to improve the lives of low-income families and individuals in our service area."

We are so grateful to have these two talented women joining our team. Please join us in welcoming them both!

Partner Spotlight

Egg Donation

Thanks to the St. Louis Area Foodbank, our volunteers Jeff and Rod (pictured right) picked up cases of eggs for 180 families.



Easter Basket Donation

Salem Methodist Church generously donated 30 Easter baskets for children. Many thanks to Salem Methodist's volunteer Sharon (pictured left) for delivering the baskets.

Feeding Families

cont. from page 1

scholarship program. For families with school-aged children, our "Student Snacks" program helps with the purchase of snacks during summer break, a time when they're not receiving free or reduced lunches at school. And, before long, we will begin our program that helps families with the necessary cost of school supplies.

At Circle, feeding families is truly just the beginning. Our many programs continue throughout the year, with extra holiday assistance in November and December, and year-round counseling and mentoring programs.

While some of our programs are timely and "seasonal," hunger and food insecurity are not. The need for quality nutrition is year-round and Circle is here to meet the demand. Our Client Choice food pantry is our core service. We are grateful for the donations from our community that allow us to provide a wide range of foods to our clients. Meanwhile, our hardworking volunteers donate their valuable time to Circle, and we couldn't be more thankful for all that they do. We truly couldn't do it without you!



Follow Us on
Facebook and Instagram.



Visit us online at
www.circleofconcern.org



ST. MARK
PRESBYTERIAN CHURCH



Circle of Concern
FOOD PANTRY

Celebrating our 20th Annual Golf Tournament on May 18th

For almost 60 years, St. Mark Presbyterian Church and Circle of Concern have been partners in the community. St. Mark was there at the very founding of Circle, and that founding spirit has remained. Today, the church continues to show up as a faithful supporter whose congregation gives generously to help the families and individuals we serve. At the heart of that giving is one of our most anticipated events, the Circle of Concern Golf Tournament.

This year, that event reaches a milestone. On Monday, May 18, St. Mark and Orthopedic Specialists will present the 20th Annual Tournament at Aberdeen Golf Club in Eureka. What started as a simple commitment to serve low-income families has grown into a community tradition, with St. Mark bringing volunteers,

committee members, golfers, and sponsorship connections that give the event its energy and heart.

We'd like to give a well-deserved shoutout to St. Mark member and Tournament Chair, Bob Stewart, who has been at the helm since 2020. Bob's steady leadership and passion for helping others has been the quiet engine that has driven this tournament forward. Circle is incredibly grateful for everything he's brought to the role.

Every dollar raised goes toward Circle's programs and services, which support more than 750 families each month on their journey from struggle to stability. If you'd like to be a part of the fun, please visit circleofconcern.org or email tim@circleofconcern.org for more information.

Garden Greens

Happy spring! Our volunteer garden crew is hard at work planting and cultivating early spring vegetables. The seeds they've sowed will blossom into fresh, nutritious vegetables for our clients. We can't wait to watch the Circle garden grow! Check out our blog post on our website to hear from our talented gardeners. See the video under the "Recent News" tab at circleofconcern.org or scan the QR code.



Listening to Our Clients

Every other year, Circle of Concern conducts a Client Needs Assessment. This survey lets us hear directly from the people we serve about what's working and how we can improve. Completed last month, this is one of the most valuable tools we have for understanding whether our programs are truly meeting the needs of the community. All responses are fully anonymous and the survey takes about 10 minutes to complete before a client's appointment.

We collected over 600 responses to this year's survey! We look forward to sharing more as we analyze and review the results. This quote is just some of the positive feedback we've received.

"Oh, how very much I appreciate the many ways Circle helps and blesses my life through their caring, listening, concerned staff, and wide variety of assistance. The exceeding abundance of a whole circle of blessings is overwhelming. Thank you, more than words can say."



Circle of Concern FOOD PANTRY

112 St. Louis Ave.
P.O. Box 444
Valley Park, MO 63088
Address Service Requested

NONPROFIT
AUTO
U.S. POSTAGE
PAID
ST LOUIS, MO
PERMIT NO. 3252

Circle is Growing Spring 2026

Board of Directors:

Brian Boeglin
PRESIDENT

Andrea Trapet
VICE PRESIDENT

Karen Korn
TREASURER

Bridget Guffey
SECRETARY

Paul Brusati
Kathie Fuchs
John Heskett
Randy Jacobsmeyer
Susan Nunez
Edie Quick
Vinod Vydiar

We share many donations with our clients:

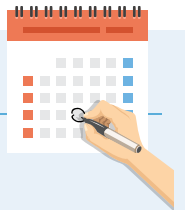
- Food, Canned and Packaged
- Fresh Garden Produce
- Dry Pet Food, Litter
- Personal Care Items

Donations are accepted:

Mon, Tues, Fri 9 a.m. - 3 p.m.
 Wed 9 a.m. - 6:30 p.m.
 Thurs 9 a.m. - 12 p.m.
 Sat 9 a.m. - 1:00 p.m.

Your monetary gift or food donation can qualify for MO Food Pantry Tax Credits. Contact [Circle@circleofconcern.org](mailto:circleofconcern.org) to find out more.

Important Dates:



- April 25** Girl Scouts April Showers Personal Care Drive
- May 7** GiveSTL Day
An online day of giving
- May 9** Letter Carriers' Stamp Out Hunger Food Drive
- May 18** Our 20th Annual Circle Golf Tournament
Hosted by St. Mark Presbyterian Church

STAFF DIRECTORY

| | |
|--|--|
| | 636.861.2623 |
| Cyndi Miller , Executive Director | cyndi@circleofconcern.org ext. 117 |
| Kathy Bratkowski , Community Relations Manager | kathy@circleofconcern.org ext. 121 |
| Tim Elwell , Director of Development | tim@circleofconcern.org ext. 106 |
| Jenny Lawrence , Director of Programs | jenny@circleofconcern.org ext. 108 |
| Beth Niezing , Administrator, Donor Relations and Finance | beth@circleofconcern.org ext. 112 |
| Virginia Pearson , Director of Nutrition and Operations | virginia@circleofconcern.org ext. 107 |
| Becky Pool , Pantry Coordinator | becky@circleofconcern.org ext. 120 |
| Brittanie Selbert , Volunteer Manager | brittanie@circleofconcern.org ext. 113 |